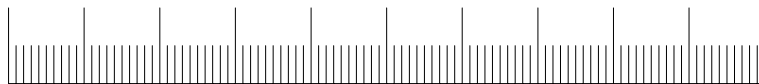
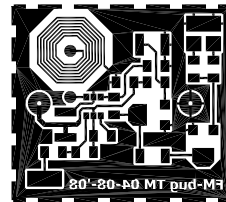
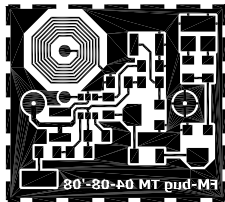
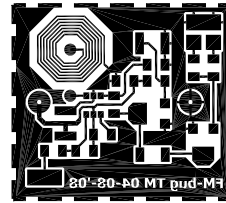
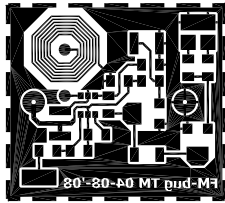


MAX2606 FM bug V2.0  
<http://www.kleinsfijn.nl>  
Thijs Möring

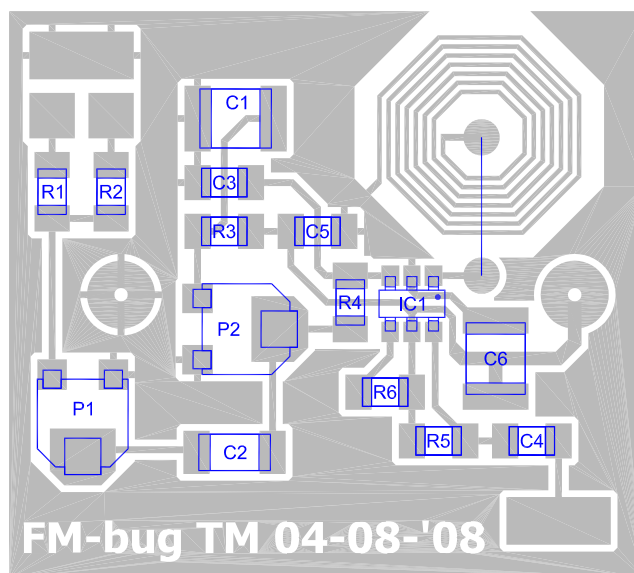
PCB layout (top view)



Scale guide (10cm)

MAX2606 FM bug V2.0  
<http://www.kleinsfijn.nl>  
Thijs Möring

components layout (top view)



MAX2606 FM bug V2.0  
<http://www.kleinsfijn.nl>  
Thijs Möring

components layout (bottom view)

